

Rely on us.SM



rotec[®] Eco Bridge

Innovative adapter air flow system

Increase Productivity • Reduce Noise • Enjoy Work

FlintGroup
Flexographic Products



The rotec® Eco Bridge is a patent-pending, state-of-the-art product for use in flexographic printing presses and on plate-mounting equipment. The rotec® Eco Bridge uses an innovative, totally new way to supply the air for sleeve mounting, and offers huge advantages compared to the historical standard adapter.

Cost Savings and Increased Productivity

The rotec® Eco Bridge's unique breathable metal ring on the operator side distributes the air from the air cylinder more efficiently across the entire circumference of the adapter.

This allows the rotec® Eco Bridge to mount sleeves considerably easier and faster than standard adapters, which have only four to eight air stream holes on the operator side. In the current flexographic market, where the runs keep getting shorter and the job changes more frequent, the rotec® Eco Bridge provides a substantial reduction in press set-up times for increased productivity and meaningful cost savings.

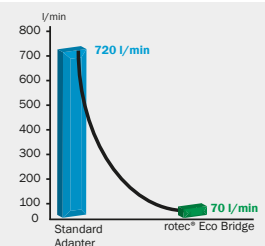
The compressed air volume can also be significantly reduced with the rotec® Eco Bridge. Up to 90 % less compressed air volume is required for easier sleeve mounting compared to a standard adapter. This means variable air pressure and flow, typical on some presses, is less of an issue. You save money with every use of the rotec® Eco Bridge.

Improved Health & Environmental Safety

The new system not only provides significant cost savings, but the reduced air volume also equates to much less noise. A working rotec® Eco Bridge produces decibel levels a little over normal room noise (< 60 dB) compared to a typical standard adapter set-up at ≥ 85 dB. This makes working with the rotec® Eco Bridge more comfortable, and more importantly, improves safety by lowering the risk of ear damage significantly.

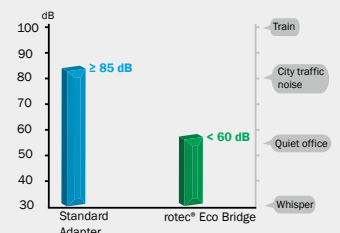
Air Volume Reduction

The rotec® Eco Bridge requires as low as 50-70 l/min air volume to mount sleeves. That is a reduction of more than 90 % compared to a standard adapter.



Noise Reduction

The rotec® Eco Bridge operates at less than 60 dB. Compared to a standard adapter, this is perceived by the human ear as 99 % less audible sound.

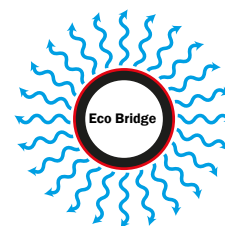
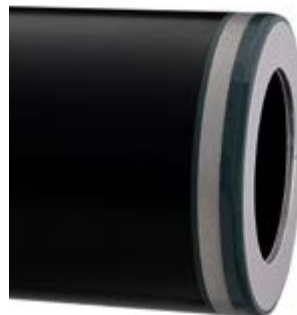
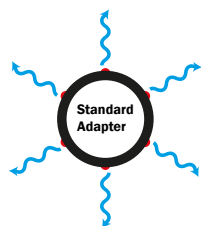


Innovative solutions for everyone.

Working with sleeves was never easier than with the rotec® Eco Bridge.

How it Works

The rotec® Eco Bridge is an adapter with a breathable metal ring at the operator side which creates an air pillow to allow easy and fast mounting of sleeves. Typical adapters have only four to eight air stream holes to help mounting the sleeves. In comparison, the rotec® Eco Bridge forms a ring of air across the entire circumference of the adapter. This grants you an easier, faster and even safer way to mount sleeves.



- | | |
|---|--|
| <ul style="list-style-type: none"> • Four to eight air stream holes on operator side • Slower formation of air pillow • Adequate standard sleeve mounting • Additional air holes along the length of the adapter are required | <ul style="list-style-type: none"> • Breathable metal ring across entire circumference on operator side • Faster, more efficient air pillow • Easier and faster sleeve mounting • No additional air holes along the length of the adapter are needed |
|---|--|

Overview	
Field Of Application	Mid-web, Wide-web, Pre-press
Wall Thickness	From 15.9 mm
Face Length	Up to 1700 mm (additional sizes available on request)
Specifications	Outer diameter from 101 to 295 mm Outer diameter tolerance +/- 0.02 mm TIR (= total indicated runout) < 0.025 mm (measured on air-cylinder at TIR < 0.005 mm) Face length tolerance as per DIN ISO 2768 T1 c
Materials	Extremely durable polyurethane top-layer (75 Shore D) Innovative, highly stressable polyurethane foam Proven rotec® compressible glassfibre base Aluminium end plate for long-lasting protection
Handling	Generally scratch- and solvent resistant (if handled correctly – see rotec® User's Advice)
Air Flow Systems	Unifit – for air directly from air cylinder to rotec® Eco Bridge ring Air cylinder holes should be ≥ 10 mm from edge of operator side (product for non-standard air hole placement, available on request) Airo – for external air source to rotec® Eco Bridge ring
Available Premium Upgrades	rotec® Ω-Technology – conductive from inner base to surface Range of interlock/standard notches or register ring Register Pin

Made in Germany



You are welcome to contact us for further information.

Flint Group Flexographic Products
Solmsstraße 83
48683 Ahaus
Germany

T +49 711 9816-541
F +49 711 9816-801
info.flexo@flintgrp.com
www.flintgrp.com

The aim of our technical documents is to inform and advise our customers. The information provided herein is correct to the best of Flint Group's knowledge. No liability for any errors, facts or opinions is accepted. Customers must satisfy themselves as to the suitability of this product for their application. No responsibility for any loss as a result of any person placing reliance on any material contained herein will be accepted. Product names followed by ® are trademarks registered by Flint Group (represented by Flint Group US LLC or Flint Group Germany GmbH).